

**CROWN**

# PC 4500 SERIES

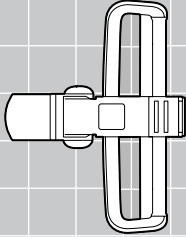
## Profile Sheet

Center Control Pallet Truck

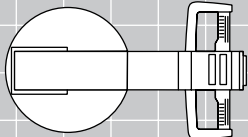


# PC 4500 Series

Manual Steering Option

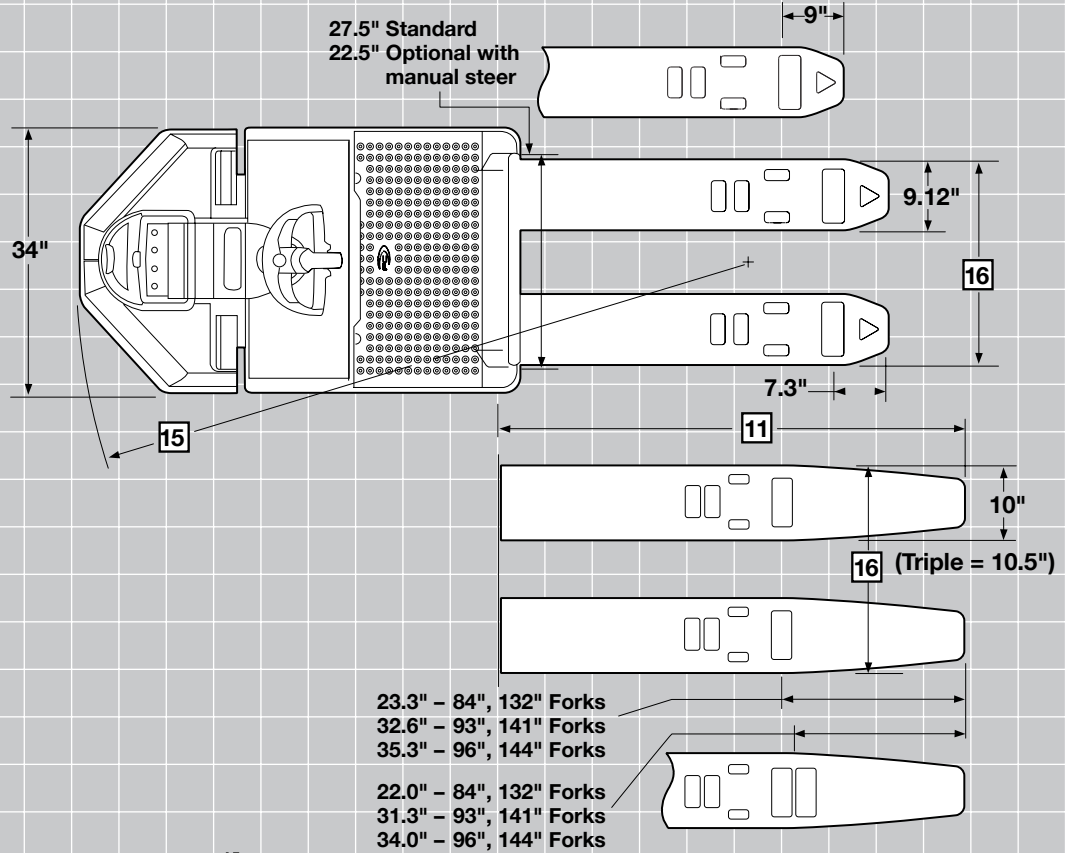


T-handle

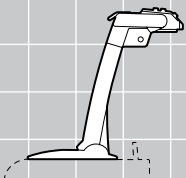


Tiller-style handle

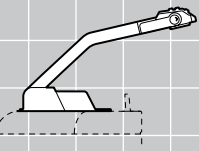
Electronic Power Steering Standard



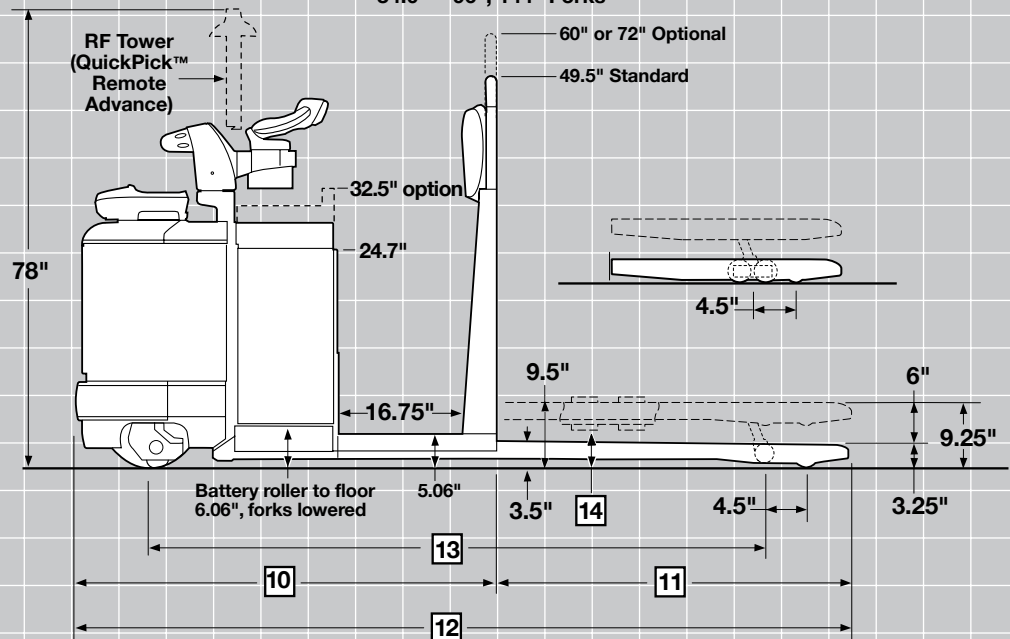
Manual Steering Option



T-handle



Tiller-style handle



## PC 4500 Series

General Info	1	<b>Manufacturer</b>		<b>Crown Equipment Corporation</b>
	2	<b>Model</b>		PC 4500
	3	<b>Load Capacity</b>	lb	6000/8000
	4	<b>Power</b>	Electric	24 Volts
	5	<b>Operator Type</b>	Stand-up	Ride
Dimensions	8	<b>Lift Height</b>	in	9.25
	9	<b>Lift</b>	in	6
	10	<b>Head Length</b>	in	57.31
	16	<b>Outside Fork Spread</b>	Standard Tip	in
Extended Tip*			in	23/28
Battery	11	Min/Max Weight	lb	975/1500
		Max Amp	amp	750
		Max Battery Size WxLxH	in	13.9 x 31.12 x 31.62

\* Add .5" for triple length forks

PC 4500 Series		Standard-Tip Forks								
Forks		<b>Nominal Fork Length</b>	in	36	42	48	54	60	96	
	11	<b>Actual Fork Length</b>	in	35.75	41.75	47.75	53.75	59.75	95.75	
	12	<b>Overall Length</b>	in	93.06	99.06	105.06	111.06	117.06	153.06	
	13	<b>Wheelbase</b>	Forks Raised	in	71.25	77.25	83.25	89.25	95.25	133.25
	14	<b>Grade Clearance</b>	%	25	23	21	20	19	13	
	15	<b>Turning Radius</b>	Forks Raised	in	81.40	87.40	93.40	99.40	105.40	143.30
	7	<b>Truck Weight** w/o battery</b>	6000 lb	lb	1975	1991	2007	2023	2039	2189
	8000 lb		lb	1994	2018	2042	2066	2090	2254	

PC 4500 Series		Extended-Tip Forks								
Forks		<b>Nominal Fork Length</b>	in	84	93	96	132	141	144***	
	11	<b>Actual Fork Length</b>	in	83.75	93	95.75	131.75	141.00	143.75	
	12	<b>Overall Length</b>	in	141.06	150.31	153.06	189.06	198.31	201.06	
	13	<b>Wheelbase</b>	Forks Raised	in	103.25	103.25	103.25	151.25	151.25	151.25
	14	<b>Grade Clearance</b>	%	17	17	17	12	12	12	
	15	<b>Turning Radius</b>	Forks Raised	in	113.40	113.40	113.40	161.40	161.40	161.40
	7	<b>Truck Weight** w/o battery</b>	6000 lb	lb	2172	2253	2268	2725	2806	2821
	8000 lb		lb	2232	2313	2328				

\*\* Subtract 80 lb from trucks weights above when ordering manual steering option

\*\*\* Configurations available with shorter wheelbase and turning radius.

Wheels and Tires		PC 4500-60 and PC 4500-80	
	Model		
	Drive Tire	in	13 x 4.5 x 8 Poly
	Casters	in	2 - 4 x 2.5 Poly
	Load Wheels	in	2 - 3.25 x 6.5 (-302)
	-301 Moderate cut/tear resistance, high capacity. High capacity transport. Not for dock use.		
	-302 Highest cut/tear resistance offered. Extremely high capacity, low rolling resistance. Docks, rough floors and floor debris.		
	-401 Combines good cut/tear resistance and very high capacity. Use where nothing else works.		



**Crown Equipment Corporation**  
New Bremen, Ohio 45869 USA  
**Tel** 419-629-2311  
**Fax** 419-629-3796  
crown.com

**You can count on Crown to build lift trucks designed for safe operation, but that's only part of the safety equation. Crown encourages safe operating practices through ongoing operator training, safety-focused supervision, maintenance and a safe working environment. Go to [crown.com](http://crown.com) and view our safety section to learn more.**

Because Crown is continually improving its products, specifications are subject to change without notice.

Crown, the Crown logo, the color beige, the Momentum symbol and QuickPick are trademarks of Crown Equipment Corporation.

Copyright 2011-2012 Crown Equipment Corporation  
SF18477 Rev. 01/12  
Printed in U.S.A.